

DécoPlâtre

About DécoPlâtre

DécoPlâtre is a decorative plaster made from natural gypsum. It is integrally colored and is applied as a traditional, lightweight plaster.

Substrates

DécoPlâtre is designed for interior walls and ceilings over a variety of clean and sound conventional masonry substrates such as terra cotta, brick, CMU block as well as traditional plaster and gypsum drywall.

*Please contact us for specific guidance regarding use over historic substrates such as ashlar stone, timber, cob or lime.

Advantages

Lightweight and ready to use out of the bag, DécoPlâtre makes for a very easy, safe and efficient application.

Produced integrally colored and pre-blended, mixing errors are avoided. Whatever the chosen finish, DécoPlâtre produces a hard, dust-free surface.

Eliminating the need for paint, DécoPlâtre is neither a potential allergen nor a source of harmful VOC's.

Moreover, it preserves all the good qualities associated with plaster: regulation of humidity and breathability as well as thermal and acoustic properties. The end result is natural, healthy and sustainable finish with little to no maintenance over time.

Application

The use of DécoPlâtre should conform to standards for traditional gypsum plasters.

On conventional masonry substrates maintain a minimum thickness of 12 mm / ½".

Ensure that the substrate is clean and free of dust, blisters or efflorescence, is sound, secure and in compliance with building standards.

Do not apply below 5 ° C / 40 ° F nor over a frozen or thawing substrate. Avoid applying in extreme heat or in direct sunlight. Confirm sufficient key exists to mechanically bond plaster. Bonding agent or lath may be required for smooth surfaces.

Adequately moisten surface to reduce suction according to ambient humidity, ventilation and porosity of substrate. DécoPlâtre can be mixed with a mechanical drill in buckets or be mixed and projected by an adapted spray machine.

The initial steps and order of mixing, applying, troweling, burnishing, etc. are identical to any other typical lightweight plaster. Care should be exercised not to reutilize the cream created when troweling, especially for versions containing sand aggregates.

DécoPlâtre with sand is generally finished by scraping (*gratté* finish) : nail float (DPS), "berthelet" French razor (DPF) or scratcher float (DPC). Finishing can be begun as soon as the plaster stops adhering to the tools upon scraping.

DécoPlâtre without sand (DP) and DécoPlâtre with marble (DPM) can likewise be finished by scraping with a "berthelet", (*coupé* finish) then

smoothed (*stuqué* finish) with a flexible, stainless steel trowel and water sponge trowels are not recommended for finishing.

DécoPlâtre with limestone aggregates (DPM or DPC) can be sanded when completely dry. The final result varies once it has been first scraped or smoothed.

To further draw out the richness of the material, it is possible after the initial set to scour the surface with a brass brush (*décapé* finish) especially DPL, with flax straw, but also DPF, DPS and DPC.

Protection measures should be taken until the surface is completely dry.

As many finish variations are possible and reflect the hand of the artisan it is recommended to present a large scale sample for the client's approval.

Setting time

2 h. Machine sprayable.

Consumption

Without sand (DP, DPL) :
8.5 kg / m² / cm thickness
2.2 lb / ft² / ½" thickness

With sand (DPS, DPC, DPF, DPM) :
10 kg / m² / cm thick
2.6 lb / ft² / ½" thickness

Packaging & Storage

Packaged in paper sacks on wrapped pallets.
Store for up to 4 months above ground in a dry, ventilated space.

Code	Composition	Possible Finishes
DP	DécoPlâtre pure, unaggregated	<i>Lissé, coupé...</i> (Smoothed, cut)
DPS	DécoPlâtre with sand, "classic" (0/2 mm)	<i>Gratté, décapé...</i> (Scraped, scoured)
DPF	DécoPlâtre with fine sand (0/1 mm)	<i>Gratté fin, coupé, lissé, décapé...</i> (Finely scraped, smoothed, cut, scoured,...)
DPC	DécoPlâtre with large limestone sand (0/3 mm)	<i>Gratté gros, ribbé, poncé...</i> (Roughly scraped, brocade, sanded)
DPM	DécoPlâtre with fine marble powder (< 0,6 mm)	<i>Poncé, lissé, stuqué, coupé...</i> (Sanded, smoothed, polished, cut)
DPL	DécoPlâtre with flax straw	<i>Décapé, lissé...</i> (Scoured, smoothed)

DECO
SYSTEME



Manufacturing
Decorative
Plasters

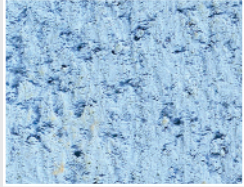
We manufacture a wide range of decorative products including : integrally colored plasters, veneer plasters for drywall, gypsum lime plaster, gypsum clay plaster, Faux-Pierre, Faux-Brique and Ice Plaster : contact us for more information.

www.decosysteme.com
contact@decosysteme.com

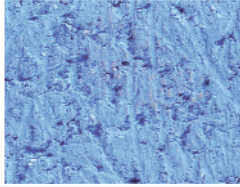
DécoPlâtre

DécoPlâtre with sand

Sky DPS4869



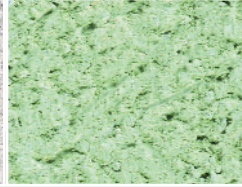
Forget-me-not DPS5926



Pearl DPS5941



Anise DPS5894



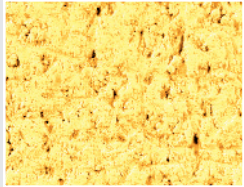
Chalk DPS5929



Lambskin DPS5919



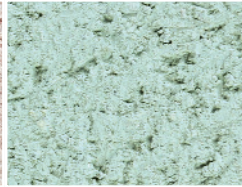
Straw DPS5892



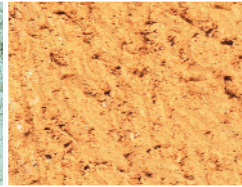
Rosewater DPS5920



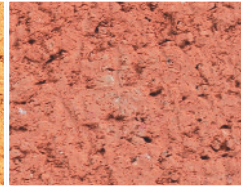
Aqua DPS5925



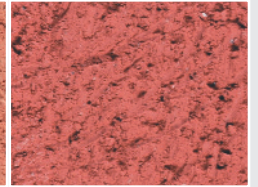
Mango DPS5923



Terracotta DPS5928



Pompeii Red DPS5893

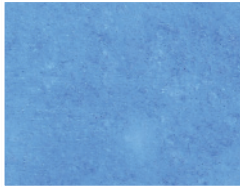


DécoPlâtre without sand

Sky DP4869



Forget-me-not DP5926



Pearl DP5941



Anise DP5984



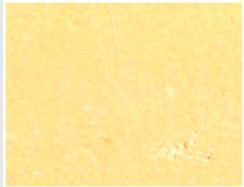
Chalk DP5929



Lambskin DP5919



Straw DP5892



Rosewater DP5920



Aqua DP5925



Mango DP5923



Terracotta DP5928



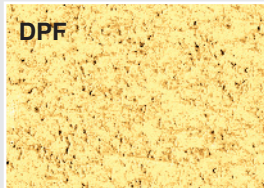
Pompeii Red DP5893



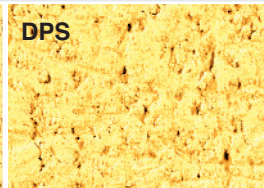
Finishes

Gratté (Scraped)

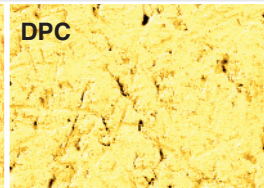
DPF



DPS

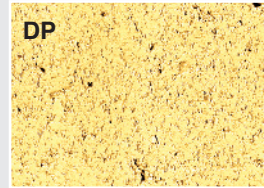


DPC

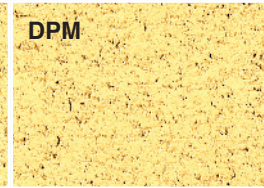


Coupé (Cut)

DP

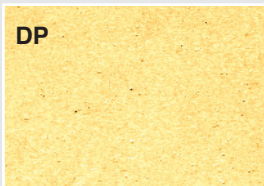


DPM

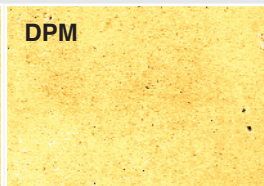


Lissé (Smoothed)

DP



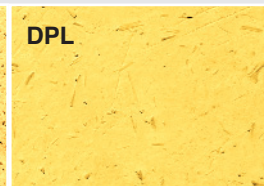
DPM



DPF

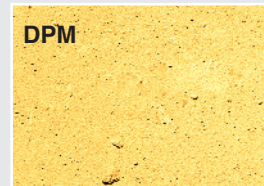


DPL



Poncé (Sanded)

DPM



Autres (Lissé poncé, Décapé, Bosselé...)

Others (Smoothed and sanded, scoured, paged,...)

DPC Lissé Poncé
(smoothed sanded)



DPL Décapé
(scoured)



**DECO
SYSTEME**



Manufacturing Decorative Plasters

11 rue Saint Paul

95230 Soisy sous Montmorency - France

Tél : + 33 (0) 139 892 048 / Fax : + 33 (0) 134 280 790

www.decosysteme.com

contact@decosysteme.com